



2/5 Gilmore Road Lalor Park NSW

4  2  2 

This magnificently modern, brand new two storey family home, situated in a location prospective buyers are clamouring to live in, is available for purchase off the plan. This is for the visionary home owner, and here is the vision: a lovely, contemporary home radiant with natural light, with ultra-sleek appointments, well-proportioned and secluded private areas, open and easy-flowing living spaces opening out seamlessly to a large, neat, paved covered entertaining area that will offer flexible hosting and hours of enjoyment for your lucky guests. The perfectly placed kitchen combines with the living area for a true social engine room! This family abode is versatile, full of vitality and very well positioned.

Features:

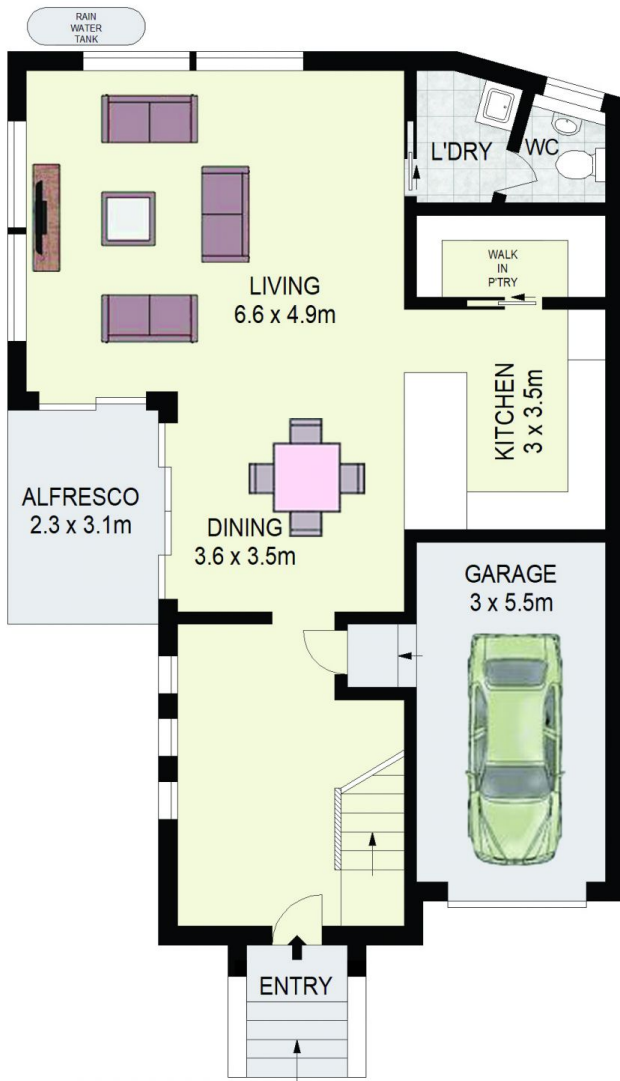
? Four bedrooms with built-in wardrobes, ensuite and walk-in wardrobe to master bedroom

Price : Contact Agent

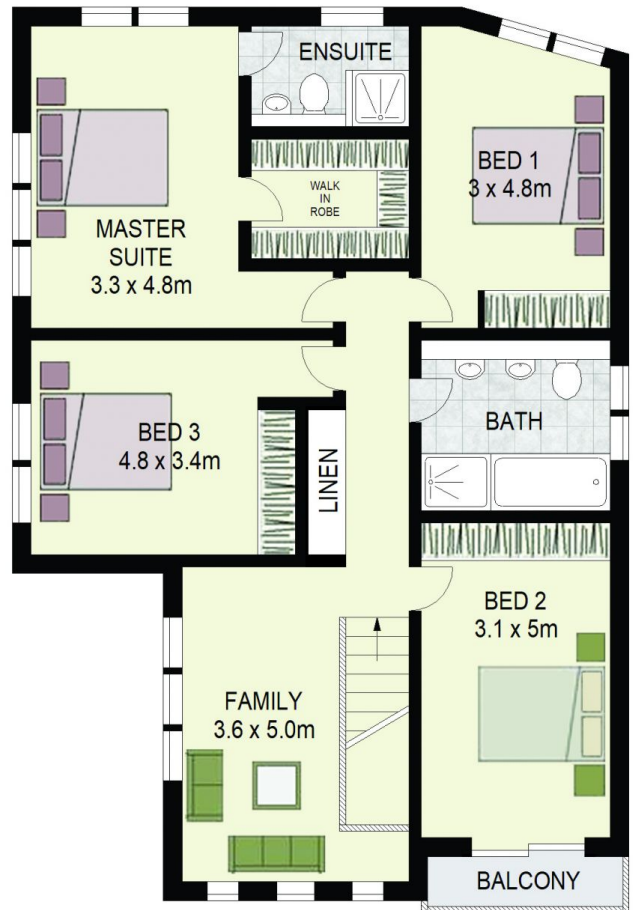
View : <https://www.agiuspropertygroup.com.au/sale/nsw/western-sydney/lalor-park/residential/house/7214809>



Alistair Agius
02 8320 0598



GROUND FLOOR



FIRST FLOOR



Unit 2-5 Gilmore Road,
Lalor Park

DISCLAIMER: All dimensions are approximate and for illustrative purposes. Interested parties should rely on their own enquiries. Floor Plans by ShutterBooth Sydney.