






23A Moffatt Drive Lalor Park NSW

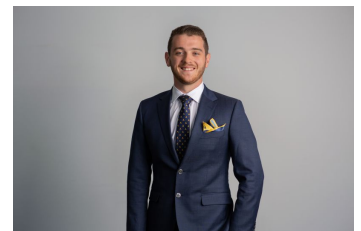
5  3  2 

This fantastic two-storey family abode is everything the sleek, modern lines of its exterior suggest it is. Your family will love its warm embrace. The living spaces are huge, yet welcoming, and open out to your extensive covered entertainer's deck complete with kitchenette, making indoor-outdoor hosting a delightful experience. The private areas upstairs are accommodating, secluded and large. There's a study/office for the student or home-based worker, and abundant workshop room in the garage for the handyman, hobbyist or tradie. The kitchen makes catering a pure pleasure. With its eye-pleasing appointments and sheer functionality, this home has something to please everyone, from the connoisseur to the busy social organiser! The location? You'll love the convenience!

Type : House
Price : \$ 1,021,000
Land Size : 313.2 sqm
View : <https://www.agiuspropertygroup.com.au/sale/nsw/western-sydney/lalor-park/residential/house/7345346>



Alistair Agius
02 8320 0598



James Brodie
0487 760 330

[For full version visit the website](https://www.agiuspropertygroup.com.au)



GROUND FLOOR



UPPER FLOOR

23A Moffatt Drive
Lalor Park



DISCLAIMER: All dimensions are approximate and for illustrative purposes. Interested parties should rely on their own enquiries. Floor Plans by ShutterBooth Sydney.