



8 Purcell Crescent Lalor Park NSW

5 🛏 3 🚿 3 🚗

A comfortable blend of the charming and the contemporary, this character-filled double-storey weatherboard family residence has been updated by loving owners. Sitting on a generous parcel of land on the high side of the street, it features the rustic charm of timber finishes and floorboards, combined with modern touches.

With a separate downstairs bathroom, the busy day-to-day traffic is easily accommodated and come the weekend, the enormous family room, opening seamlessly out into the covered outdoor entertaining area, provides a welcoming and enjoyable experience for visiting friends and family. Well-situated for shopping, education and transport, this great home has something for everyone.

Type : House
Price : \$ 950,000
Land Size : 562.8 sqm
View : <https://www.agiuspropertygroup.com.au/sale/nsw/western-sydney/lalor-park/residential/house/7768027>

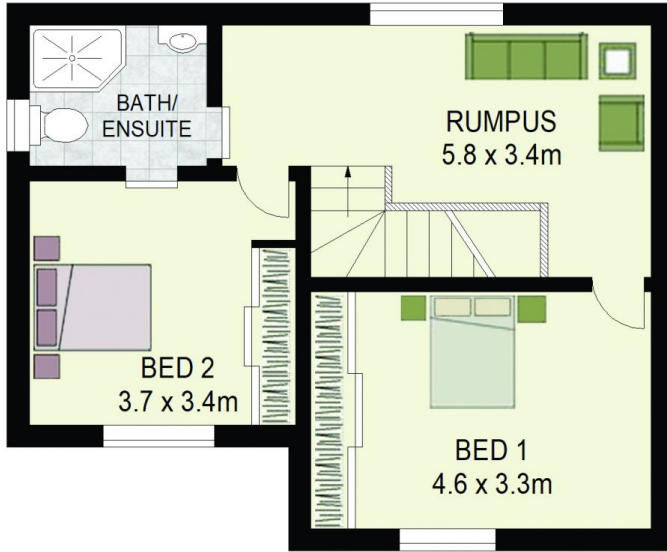


Alistair Agius
02 8320 0598

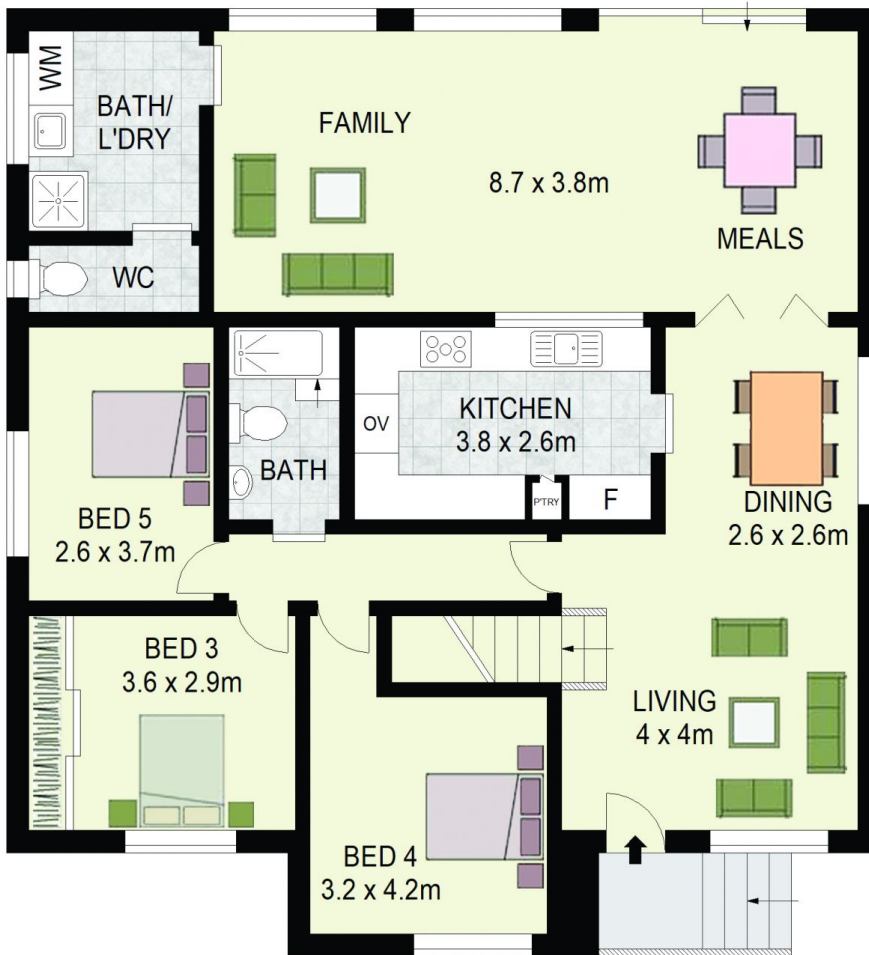


Brendan McCreanor
0468 677 471

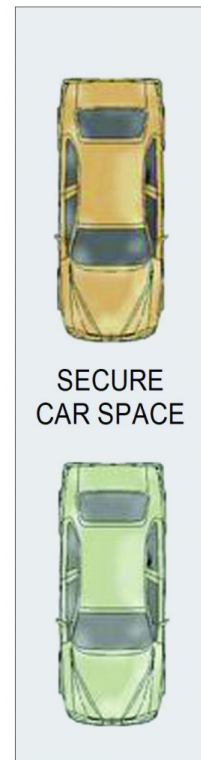
[For full version visit the website](https://www.agiuspropertygroup.com.au)



UPPER FLOOR



GROUND FLOOR



8 Purcell Street,
Lalor Park

ALISTAIR AGIUS
0447 928 888



DISCLAIMER: All dimensions are approximate and for illustrative purposes. Interested parties should rely on their own enquiries. Floor Plans by ShutterBooth Sydney.