






### 33 Wheeler Street Lalor Park NSW

3  1  2 

Sitting on a substantial, level serving of prime Lalor Park land, this single-level brick residence is a great family home, Freshly Painted and Brand New Carpet throughout! The location is extra convenient for the young, busy family, bus stop right outside the property.

**Land Size** : 619.7 sqm

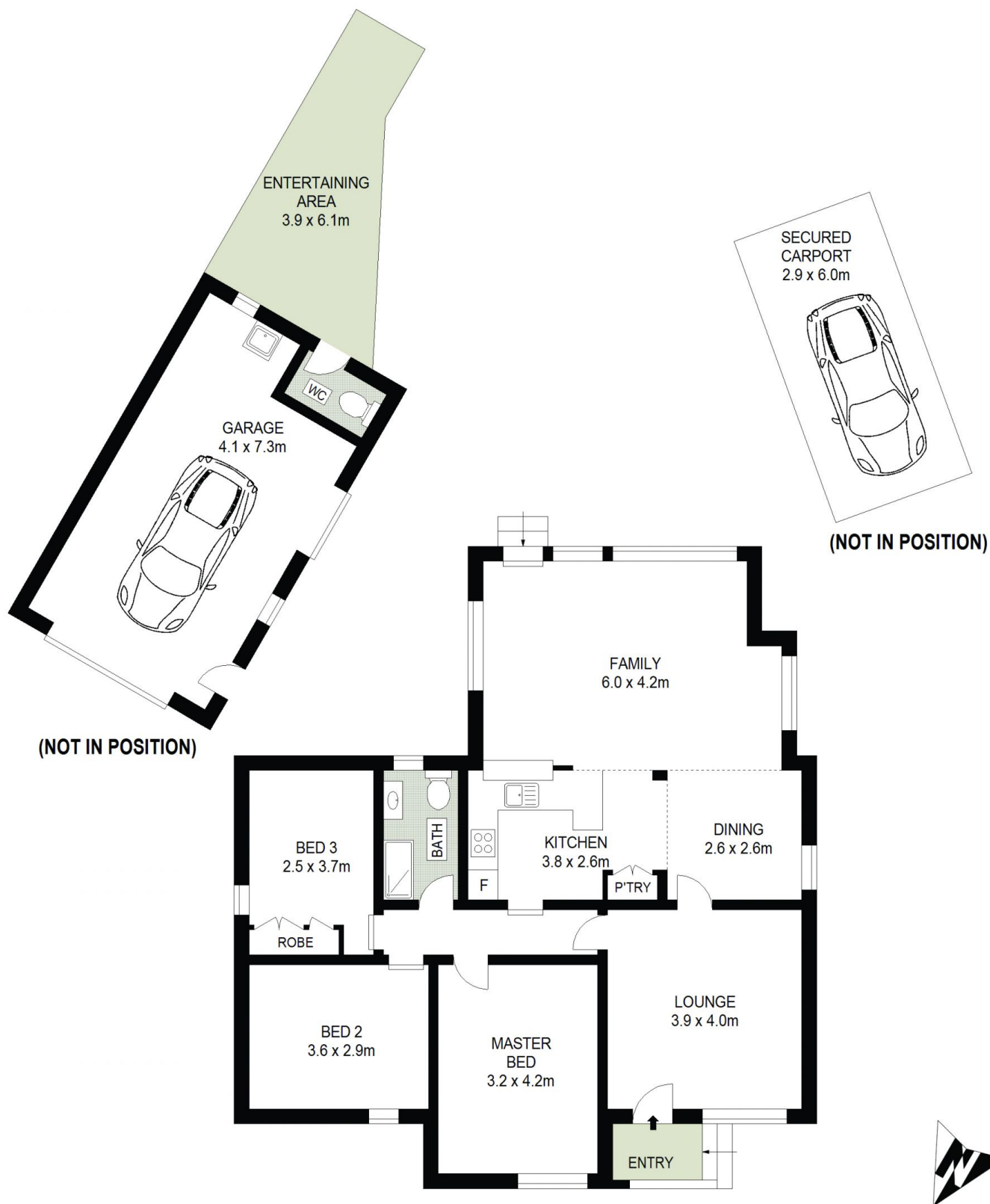
**View** : <https://www.agiuspropertygroup.com.au/lease/nsw/western-sydney/lalor-park/residential/house/7875769>

#### Features:

- ? Three bedrooms
- ? Electric kitchen with breakfast bar, extensive bench space and storage
- ? Open plan living and dining area plus separate lounge room
- ? Modern family bathroom
- ? External laundry to accommodate all linen work and storage
- ? Two toilets
- ? Large undercover entertaining deck



**Stephen Ross**  
0415 577 896



33 Wheeler Street  
Lalor Park



DISCLAIMER: All dimensions are approximate and for illustrative purposes. Interested parties should rely on their own enquiries. Floor Plans by ShutterBooth Sydney.