



1/1 Heath Street Prospect NSW

2  2  2 

Well-appointed with spacious and modern interiors and amenities to accommodate the busiest weekday traffic, this great home will appeal to the investor, busy executive, downsizer or growing family. With a living/dining area beautifully combined with kitchen and outdoor entertaining area, bedrooms that are a pleasure to wake up in, and a low-maintenance yard, this excellent residence offers the best of cosy, convenient townhouse living in a quiet and coveted location.

Features:

- Two generously-proportioned bedrooms with built-in wardrobes, walk-in -wardrobe and ensuite to oversize master bedroom
- Separate, large living and dining rooms

[For full version visit the website](https://www.agiuspropertygroup.com.au)

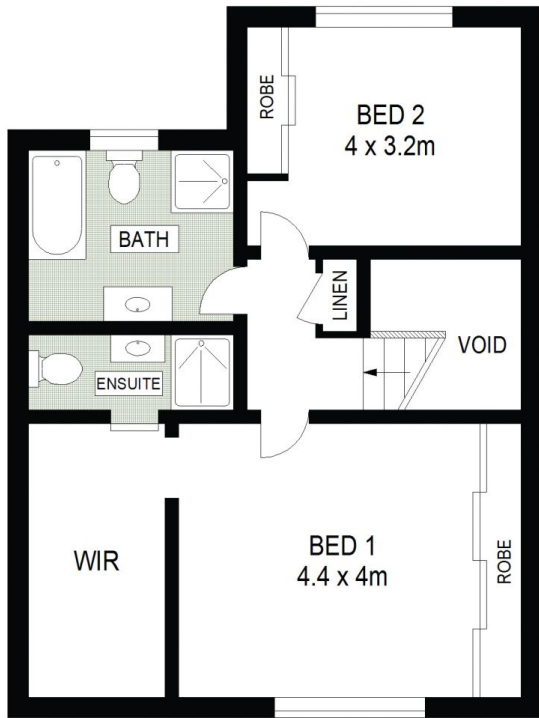
Type : Townhouse
Price : \$ 700,000
Land Size : 253 sqm
View : <https://www.agiuspropertygroup.com.au/sale/nsw/western-sydney/prospect/residential/townhouse/7911925>



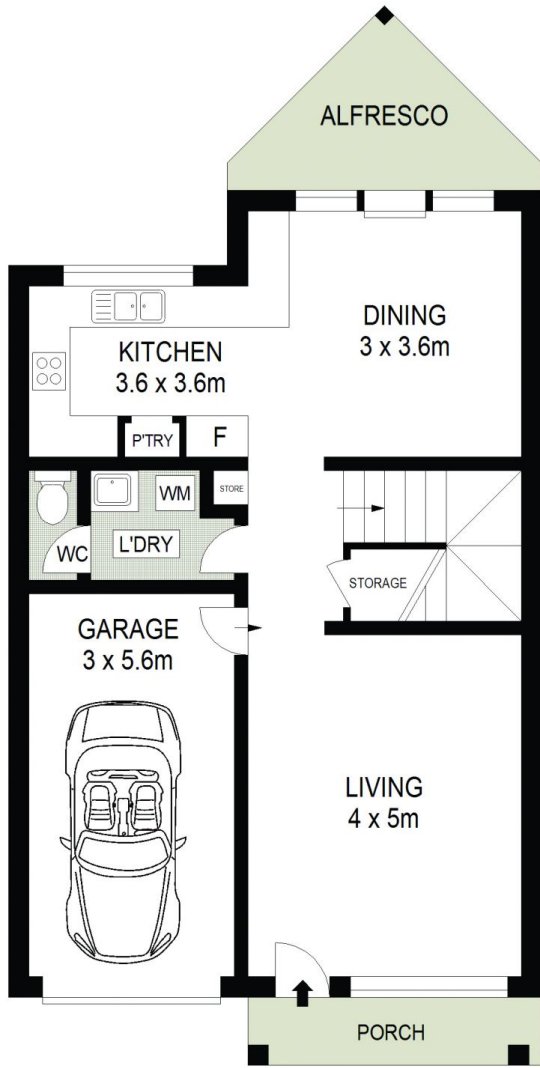
Alistair Agius
02 8320 0598



Brendan McIntosh
0423 134 975



FIRST FLOOR



GROUND FLOOR

