

403/32 Civic Way Rouse Hill NSW

2  2  1 

Singles, couples, busy professionals! If you're renting, convenience of location is your first priority, and it doesn't get any more convenient than this! Situated right near Rouse Hill town centre, this apartment has it all in terms of versatile interiors, spacious living and private areas, and access to absolutely everything, from the best shopping to transport and arterials. You'll never feel cramped in these open, light-filled spaces, and come the weekend, the living areas open out to your cosily enclosed balcony with views, for those family get-togethers or evening drinks with work colleagues or clients. Just a stroll away is a smorgasbord of eateries, cafes and, of course, the great shopping this district is renowned for!

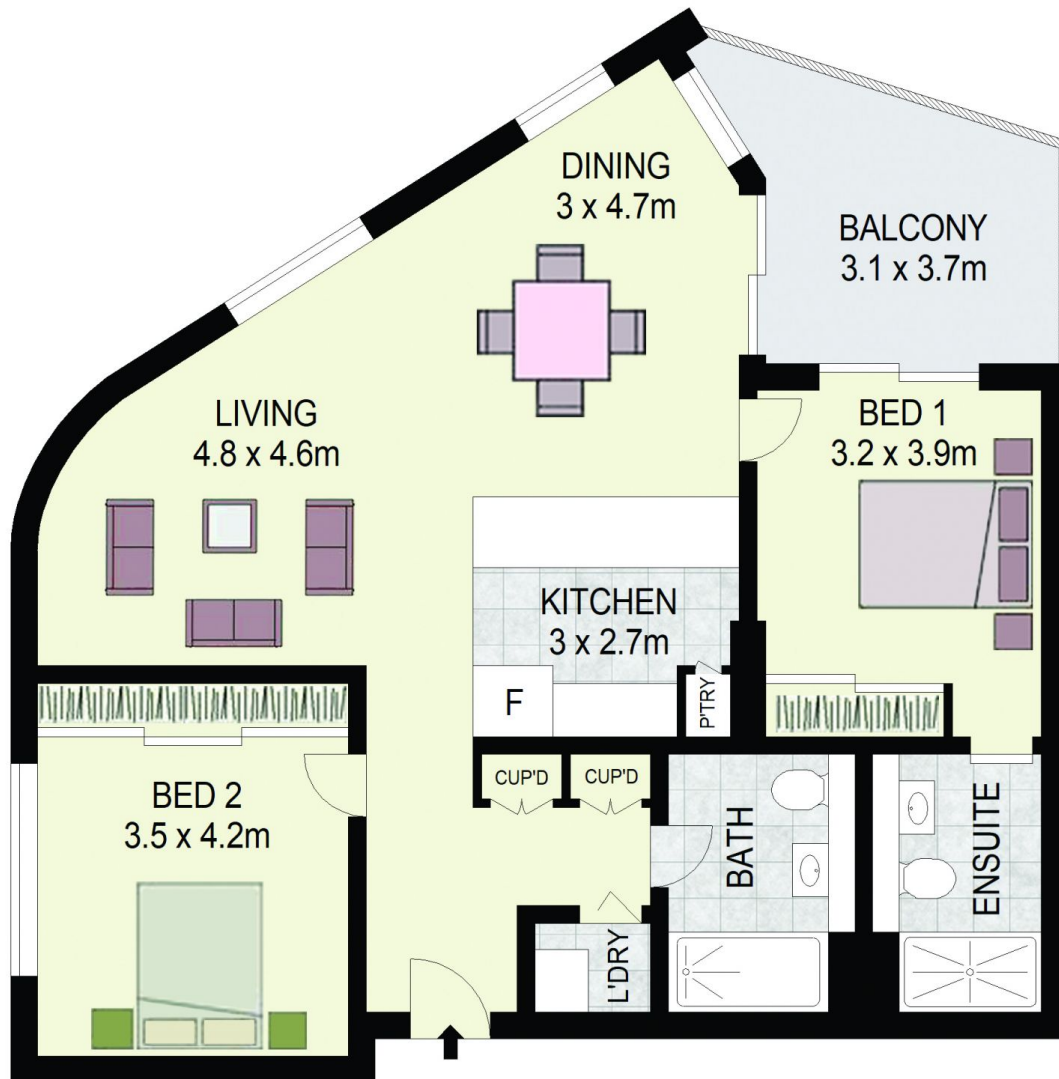
View : <https://www.agiuspropertygroup.com.au/lease/nsw/hills/rouse-hill/residential/apartment/7913077>



Stephen Ross
0415 577 896

Features:

? Two spacious bedrooms with built-in wardrobes, ensuite to master bedroom, as well as balcony access



403/32 Civic Way,
Rouse Hill

DISCLAIMER: All dimensions are approximate and for illustrative purposes. Interested parties should rely on their own enquiries. Floor Plans by ShutterBooth Sydney.