



2 Newington Glade Marsden Park NSW

3  2  2 

If you desire complete independence yet also love the communal life, a peaceful and secure lifestyle with the convenience of the big, wide world not far away; if you're over 55, still well-and-truly active and looking for a vibrant yet serene environment with easy access to everything, you have found the perfect place to settle.

This home is bright, well-appointed, peaceful and situated in an exclusive gated community. Never again will you need to worry about upkeep! Just settle in and enjoy the immediate and larger community, the fantastic facilities and the proximity to the best services around.

Marsden Park is a flourishing and popular suburb, with established transport links and amenities, great infrastructure, a strong sense of community and projected infrastructure growth. Here, with a spacious and

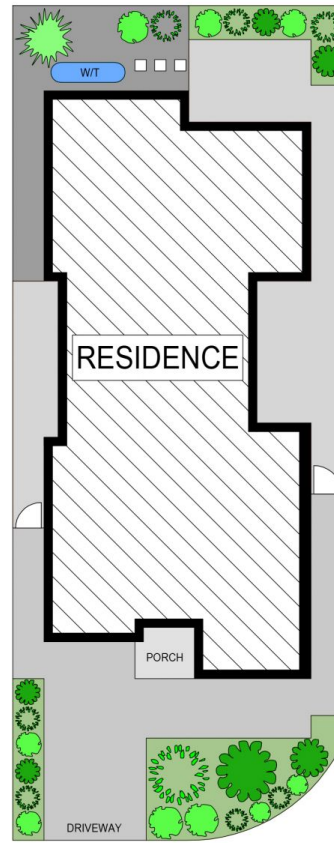
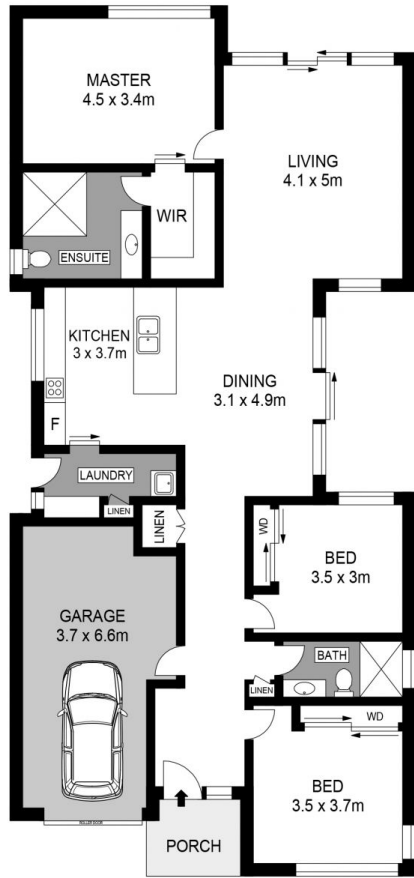
Price : Price Guide : \$900,000
Land Size : 266.6 sqm
View : <https://www.agiuspropertygroup.com.au/sale/nsw/western-sydney/marsden-park/residential/house/7918363>



Brendan McCreanor
0468 677 471



Alistair Agius
02 8320 0598



SITE PLAN (NOT TO SCALE)



2 Newington Glade, Marsden Park