

69 Sovereign Avenue Kellyville Ridge NSW

4  2  2 

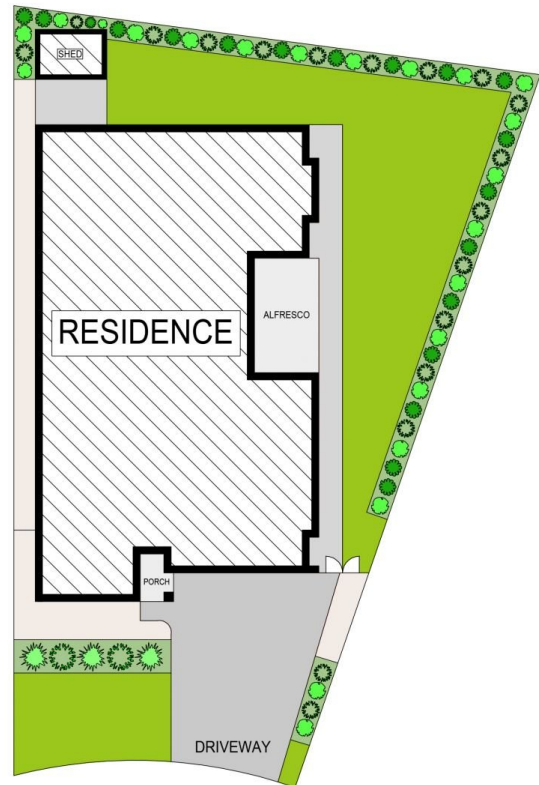
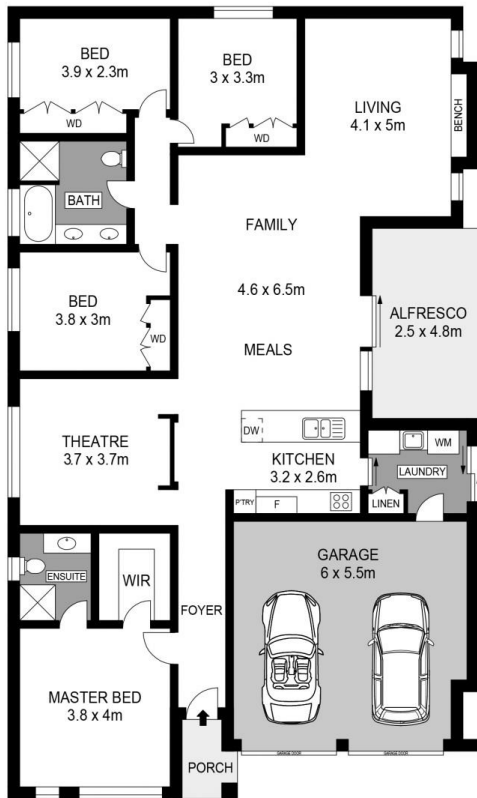
Easy-flowing in design, uncomplicated in layout, this family-friendly home offers comfort and convenience in a coveted part of town. It has four good-sized bedrooms to accommodate the growing family or extended family. The living spaces are large and breezy, there are amenities enough to deal with the busy weekdays, and come the weekend, hosting is a pleasure, as the living areas open out to a neat, spacious alfresco dining area. The theatre room offers a pleasant cinema experience, and the family chef will be only too pleased with their well-appointed kitchen, well-placed to serve hungry family and guests. All this, and a location buyers are clamouring to call their own!

Price : \$ 1,600,000
Land Size : 517.3 sqm
View : <https://www.agiuspropertygroup.com.au/sale/nsw/hills/kellyville-ridge/residential/house/7924126>

Features:
 ? Four bedrooms with built-in wardrobes, walk-in wardrobe and ensuite to master bedroom



Luke Smith
02 8320 0598



SITE PLAN (NOT TO SCALE)



69 Sovereign Avenue, Kellyville Ridge