



### 37/1/3 Bigge Street Warwick Farm NSW

2  2  1 

#### Go Bigge!

Busy professionals, couples, singles, first-homers or investors, this bright, modern and well-appointed unit, situated in a contemporary and secure complex, meets all your needs. The internal spaces are large and easy-flowing, and the zones include a study/office for the student or home-based worker. The enclosed entertainer's balcony, opening out via floor-to-ceiling sliding doors, is a lovely breakout area with views, and the perfect venue for indoor-outdoor hosting, whether it be barbecues with family and friends, or those evening cocktail soirées with colleagues or clients. Transport to any location in Sydney is not far away.

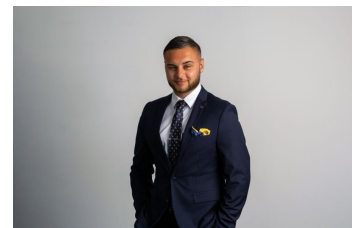
#### Features:

? Two good-sized bedrooms, ensuite to master bedroom

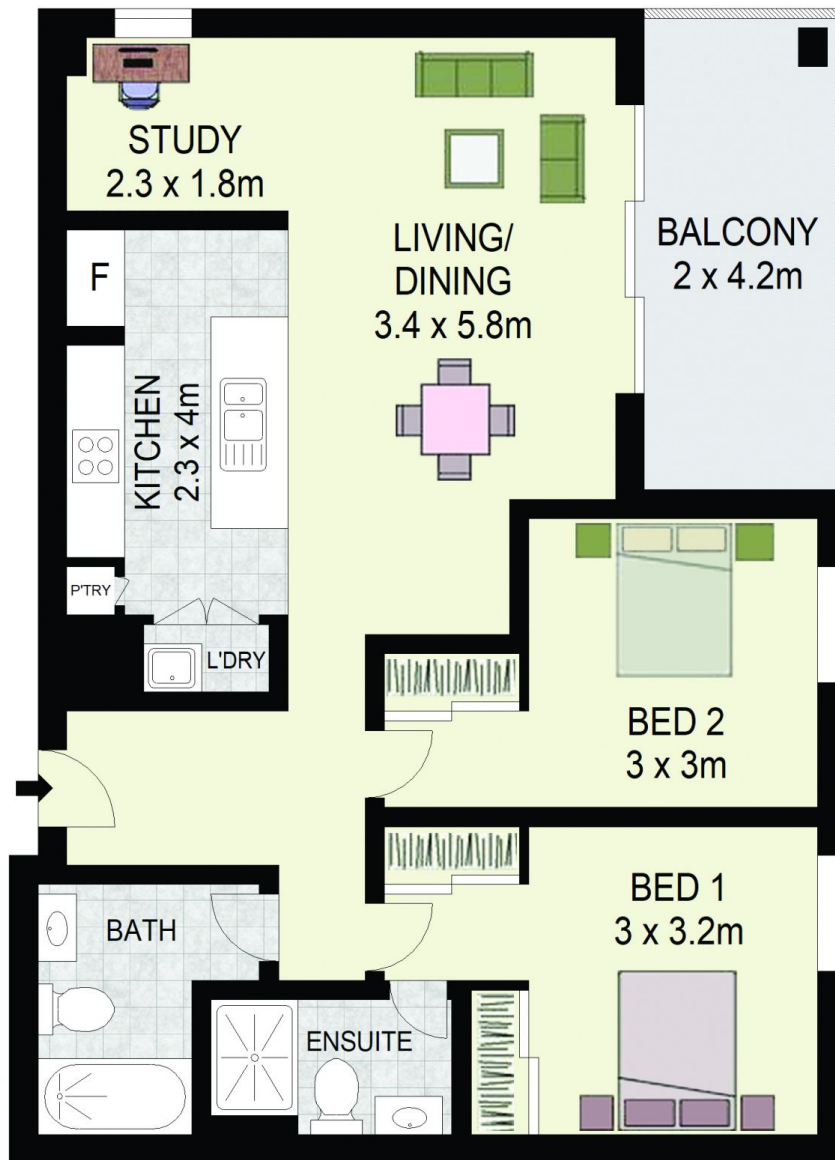
**Price** : \$ 435,000  
**Building Size** : 100 sqm  
**View** : <https://www.agiuspropertygroup.com.au/sale/nsw/liverpool-fairfield/warwick-farm/residential/apartment/7933812>



**Juliano De Rossi**  
02 8320 0598



**Nicholas Harb**  
02 8320 0598



37/1-3 Bigge Street,  
Warwick Farm

JULIANO DE ROSSI  
0406 411 666



DISCLAIMER: All dimensions are approximate and for illustrative purposes. Interested parties should rely on their own enquiries. Floor Plans by ShutterBooth Sydney.