

### 31 Pineleigh Road Lalor Park NSW

3  1  1 

Renovators, builders, investors! This is a rare offering in a great part of Seven Hills a short distance to Seven Hills Station. A big block, potential galore, and a location that makes this a great investment - this property has it all, and more! The home itself will easily accommodate family while you modernise and renovate, and the big, level yard is large enough to accommodate kids and pets, a dual occupancy, extensions, additions (subject to council approval) - or you can simply take advantage of this great parcel of land and start all over again! Whatever you decide, its location, land-size and all the possibilities on offer make this a fantastic opportunity to invest in a thriving market!

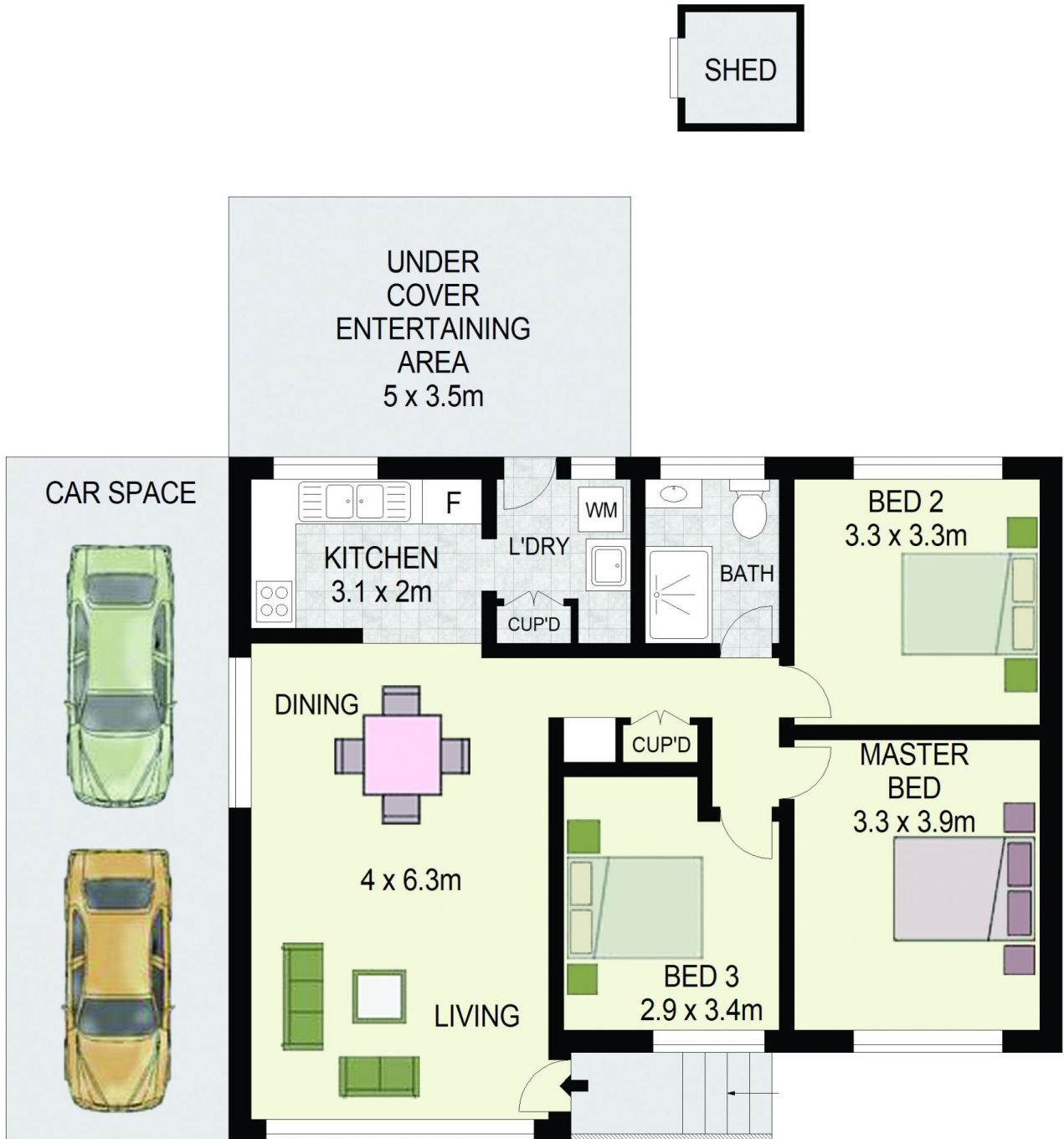
#### Features:

- ? Three good-sized rooms
- ? Large family room

**Price** : \$ 875,000  
**Land Size** : 607 sqm  
**View** : <https://www.agiuspropertygroup.com.au/sale/nsw/western-sydney/lalor-park/residential/house/7961265>



**Alistair Agius**  
**02 8320 0598**



31 Pineleigh Road,  
Lalor Park

ALISTAIR AGIUS  
0447 928 888



DISCLAIMER: All dimensions are approximate and for illustrative purposes. Interested parties should rely on their own enquiries. Floor Plans by ShutterBooth Sydney.