



### 1504/30 Shepherd Street Liverpool NSW

2  2  1 

Introducing an exceptional lifestyle opportunity within the esteemed "Bindery" at the Paper Mill complex, this remarkable apartment boasts 2 bedrooms plus a versatile study room (3rd) with captivating views of the water and city skyline.

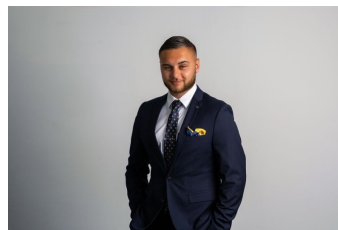
Crafted for luxurious living, this residence on the 15th floor features an inviting, light-filled interior complemented by a spacious entertainers' balcony, perfect for hosting gatherings or simply enjoying the breathtaking scenery.

Architecturally designed, the apartment showcases modern, stylish living spaces adorned with floor-to-ceiling sliding doors, flooding the home with natural light. Ideal for first home buyers and investors alike, this property offers a blend of elegance and practicality.

Key features include:

? Expansive open plan living and dining area opening onto

**Price** : \$550,000 VENDOR MUST SELL  
**Building Size** : 106 sqm  
**View** : <https://www.agiuspropertygroup.com.au/sale/nsw/liverpool-fairfield/liverpool/residential/apartment/7974184>



**Nicholas Harb**  
02 8320 0598



**Dominic Ayoub**  
0401 242 707



Unit 1504/30 Shepherd Street, Liverpool 2170