



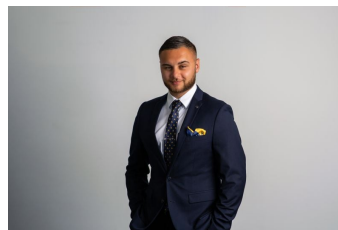


**15 Olola Avenue Castle Hill NSW**

4  2  2 

A prime, generous serving of gourmet real estate opposite a reserve, nestled in a premium residential hub moments away from the vibrant heart of Castle Hill, offering immediate access to Castle Towers, the shopping precinct and public transport - this is an exciting opportunity that gives you options. Whether you choose to simply move in and enjoy a solid, well-appointed brick four-bedroom home with good old-fashioned space, or whether you update, add or extend at your leisure, you have a great, resourceful family abode on a substantial block of land. This is simply a superb base for you and your family as you fulfil your vision for your new property. Meanwhile, everyday living and weekend entertaining are a cinch with an abundance of amenities and ample storage. The icing on the cake? That location in a part of the world buyers are clamouring to call their own!

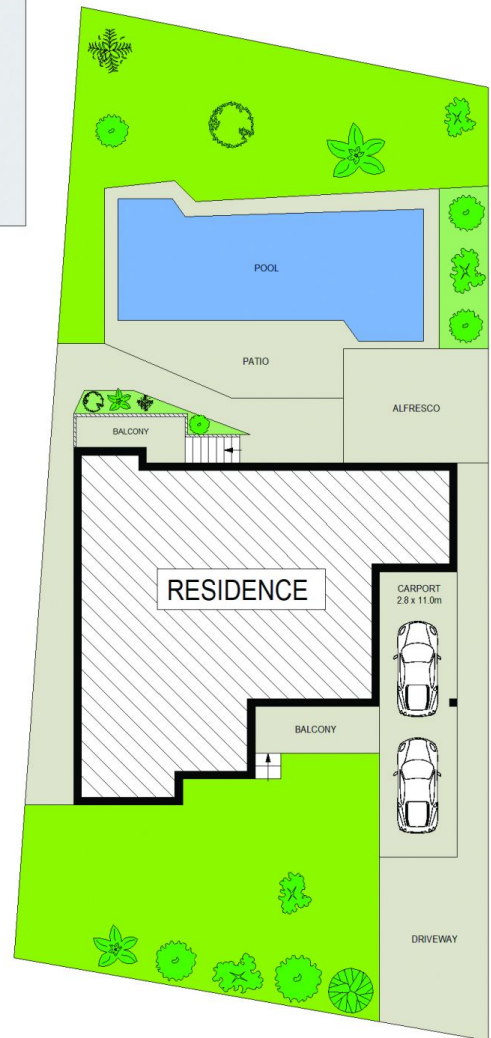
**Price** : Under Contract  
**Land Size** : 695.6 sqm  
**View** : <https://www.agiuspropertygroup.com.au/sale/nsw/hills/castle-hill/residential/house/7977196>



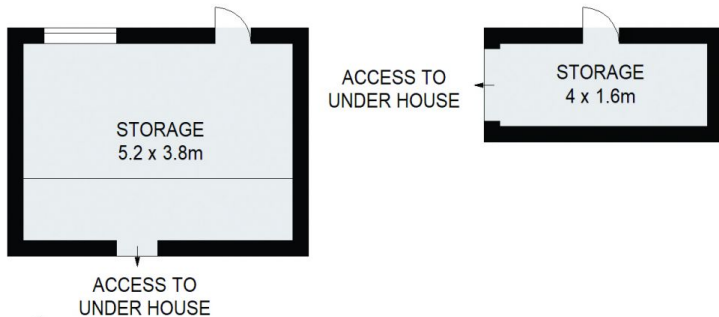
**Nicholas Harb**  
02 8320 0598



**Juliano De Rossi**  
02 8320 0598



**SITE PLAN**



15 Olola Avenue,  
Castle Hill

NICHOLAS HARB  
0427 530 419



DISCLAIMER: All dimensions are approximate and for illustrative purposes. Interested parties should rely on their own enquiries. Floor Plans by ShutterBooth Sydney.