

#### 4 Parrella Grove Glendenning NSW

3  1  1 

For downsizers, first home buyers and growing families, this single-level brick home is a classy entrée into the market. The precinct is select, the living is elegant and the location extra-convenient. Situated in a boutique community setting with all the advantages that offers such as security for the family and attractive common recreation areas, its interiors are stylishly contemporary and its spaces versatile and easy-flowing - including exciting indoor/outdoor options for the entertainer and extra amenities for guests! The low-care block makes it extra-appealing for anyone who is time-poor or simply has better things to do!

Features:

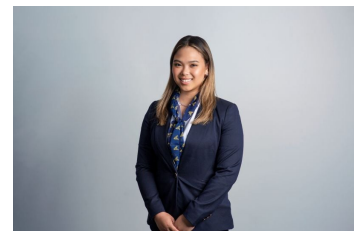
? Three well-proportioned bedrooms all with built in robes

[For full version visit the website](https://www.agiuspropertygroup.com.au)

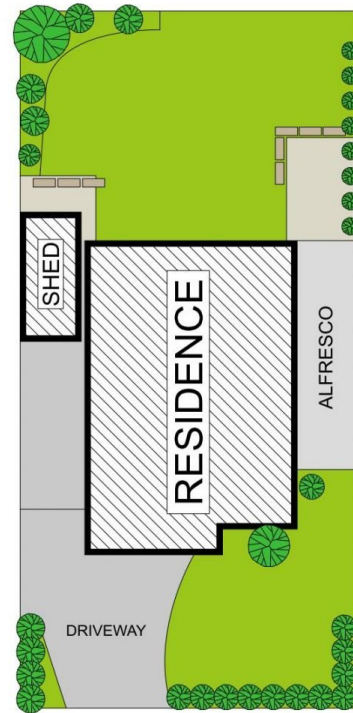
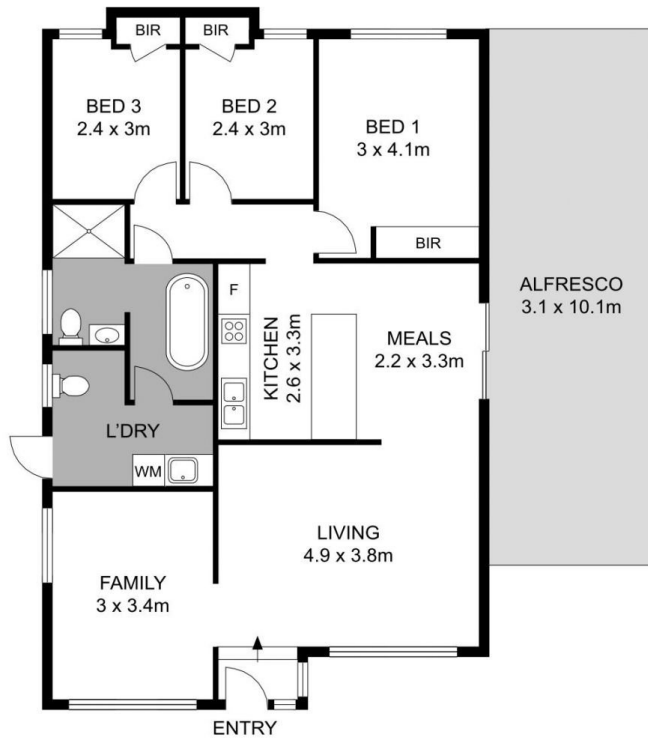
**Type** : House  
**Price** : \$ 985,500  
**Land Size** : 493 sqm  
**View** : <https://www.agiuspropertygroup.com.au/sale/nsw/western-sydney/glendenning/residential/house/8317884>



**Alistair Agius**  
02 8320 0598



**Arianne Fontanilla**  
0410 202 550



4 Parrella Grove, Glendenning