



25 Bittern Grove Glenwood NSW

4  2  2 

This perfectly positioned home in a quiet and highly sought-after pocket of Glenwood offers generous living spaces, modern comfort and a practical family-friendly layout. Ideal for families looking for space, convenience and lifestyle.

Type : House
Price : \$900 per week
View : <https://www.agiuspropertygroup.com.au/lease/nsw/western-sydney/glenwood/residential/house/8700702>

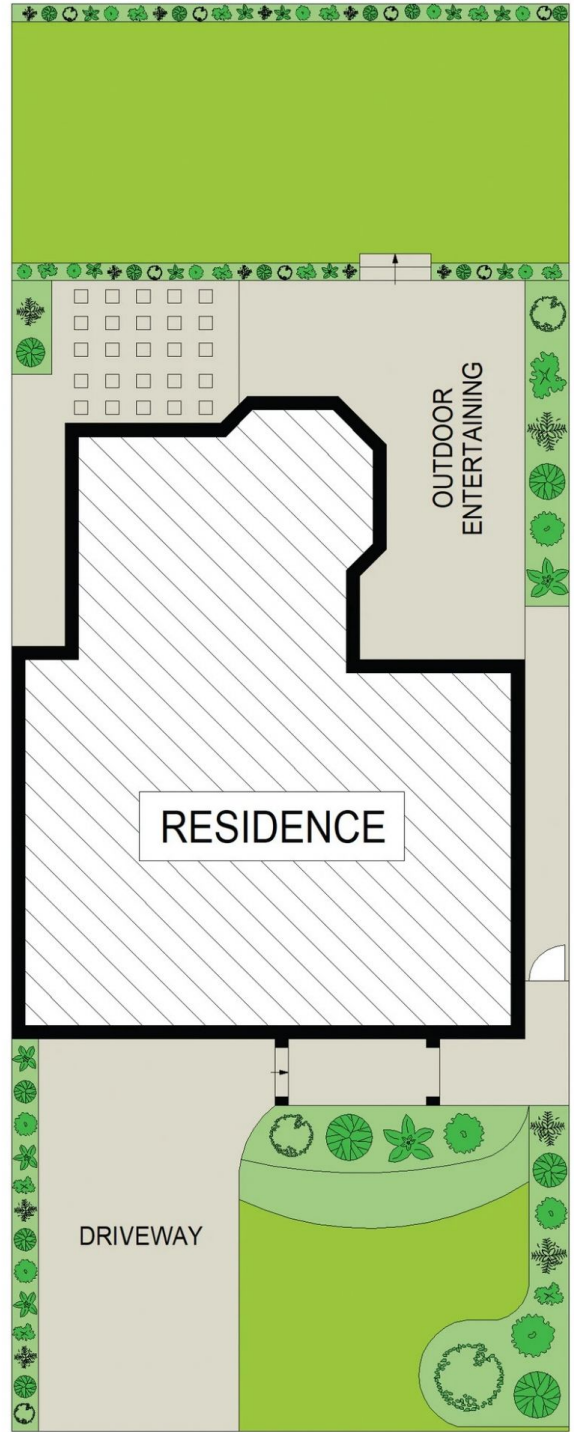
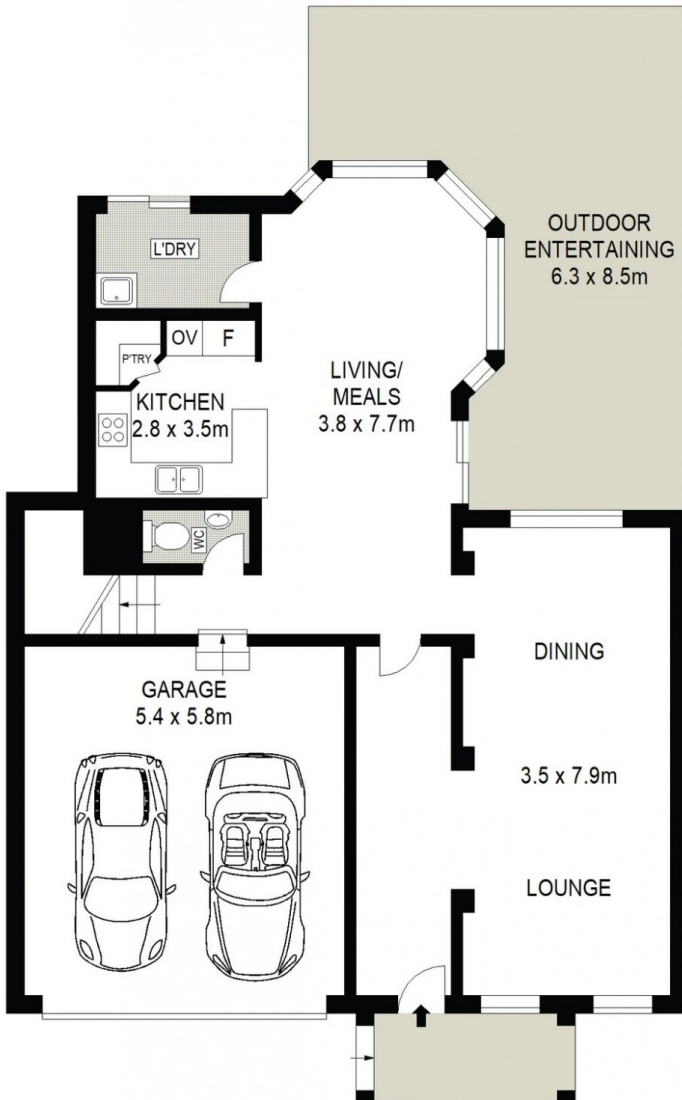
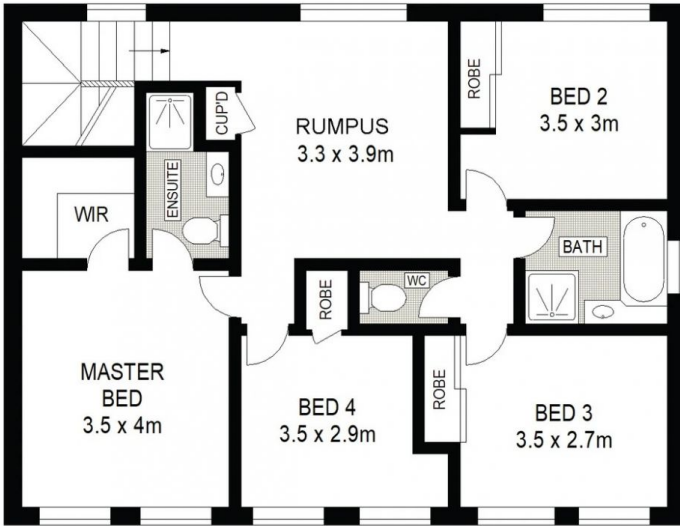
Featuring multiple living and dining areas, a well-appointed kitchen, spacious bedrooms and a low-maintenance backyard perfect for entertaining, this home provides everything you need for comfortable everyday living.

Conveniently located close to local schools, parks, shopping centres, public transport and easy access to major roadways, this property offers both comfort and convenience in a fantastic location.



Denise Abood
0420 312 988

[For full version visit the website](https://www.agiuspropertygroup.com.au)



SITE PLAN



25 Bittern Grove, Glenwood

DISCLAIMER: Floor plan and site plan are for illustration purposes only. Measurements, boundaries and north arrow orientation are approximate. Interested parties should verify details independently. Floor Plans by ShutterBooth Sydney.